



Bringing Smile and Hope for the Underprivileged



Annual Report 2014 - 15



# Contents



**Preface / Acknowledgment**  
**Organisation Vision and Mission**  
**C E O Message**  
**Message by Managing Trustees**  
**Organisation's activities at a glance**  
**Testimonials**  
**Flash through 2014 - 15 Activities**  
**Impact Report**  
**Innovations**  
**Aspirations and Way forward**



## Our Programs

**Orphanage Support Program**  
**Education Support Program**  
**Water and Sanitation Program**  
**Medical Support Program**  
**C S R Program**  
**Health & Nutrition Program**  
**Old Age Support Program**  
**Campaign & Volunteer Program**  
**Calamity Relief Support Program**



# Annexure



**Glimpses**  
**Donors List**  
**Audit Report**  
**Appreciation Letters**  
**Thank you Letters**  
**Press Release**

## Acknowledgment



- 1) We take this as an opportunity to thank all our partners, stakeholders and supporters to take our programme intervention to the next level.
- 2) In the year 2014-15 the support received from government bodies, local and international donors, corporate donors and and grassroot NGO's have been immense. Child Help Foundation acknowledge for the cordial support received from all over supporters in India and across the Globe.
- 3) CHF team is grateful for the consistent support of its Board Members and Patrons; we appreciate their valuable contribution and enormous support which is leading towards growth of the organization.







# PREFACE

Child Help Foundation has built on their resources and capacities over the years and is growing based on our learning and experiences. During 2014-15 we came up with distinctive and productive activities for which we received enormous support from our donors, supporters and community at large.



The activities implemented throughout the period were impact driven as it helped CHF to increase its reach, visibility and effectiveness. We are happy to present this year's Annual Report showcasing our activities that brought joy in children's (needy) lives with whom we work on day to day basis, this smile

and continuous support are acting as catalyst to transform the children lives and groom them as responsible citizen of our nation.

This year the focus has been to address issues on education, child health nutrition, sanitation hygiene and other sustainable activities which are replicable, scalable in different settings. The program activities were geared towards finding solutions for these core child development issues confronting the needs of poor and underprivileged children's in our communities.





# CHF Vision & Mission

Child Help Foundation (CHF) is a National non-profit “Enabling & Implementing Charity Organization” dedicated to help needy and neglected children. Child Help Foundation's approach focuses on basic education, development, intervention, treatment care and lot more.

## Vision

Our Vision is to be the most admired organization in supporting the overall development of underprivileged children.

## Mision

To be an equal opportunity provider for the upliftment of the underprivileged children by providing them timely education, shelter, food, care & happiness.

To be known as an organization with innovative approach towards upliftment of the needy children.

To be abreast with times to empower the underprivileged children to lead a dignified & quality life.



## Our Philosophy

Child Help Foundation believes that every child has a unique contribution to make to the world.

We shall do everything within our power to help each needy child with basic necessities and develop his/her self-esteem to reach their God-given potential.





## From the desk of CEO

Dear Friends of Child Help Foundation!!!

I am proud to present to you this copy of Child Help Foundation (CHF) 2014-15 Annual Report.

The report summarizes the highlights of 2014-15, a pivotal year for us in which we focused our efforts on our core missions of encouraging reading and learning habit among needy children, strengthening and deepening of our medical & orphanage support programs & capacity building of staff.

Child Help Foundation as an "enabling & implementing organization" owes our projects growth to our ever growing donor base without whom we couldn't have reached this far.

In our ongoing efforts to increase the impact of the Education support projects we undertake, we have come to realize that due to lack of "after school access to learning", the children tend to amiss a lot because of non-focus on home work/studies or lack of guidance at their respective homes.

These concerns confirm that there is a great need for "after school Learning Center" in their home vicinity. CHF's next phase in education support program is to create "Self Sustainable learning Centre's" in rural & slum areas.

We have a long way to go. We are at present in six states with more than 20 projects and will keep adding projects thus helping the underprivileged children by giving them their basic rights & facilitating holistic development. Our endeavour has always been to increase the number of "first generation school goers"; because we strongly believe that the underprivileged too can contribute to the nation building activity in a positive & sustained way.

This annual report will talk about all the projects executed by us under our eight different programs; most importantly it will give you the clearest picture of CHF project frame work, where we are & where we are heading. We hope this information will be helpful to you in assessing the effectiveness and responsibilities involved with the organization.

As always, we need more volunteers and active donors. As you read the report, think of areas where you might want to become involved. On behalf of the entire CHF staff and board members I would like to thank you for your support. Your support and positive comments are the fuel that keeps us moving forward to create impactful projects.

Your contribution in bringing smiles on the children's faces will go ahead a long way !!!!

I take this opportunity again to thank all the corporates, individual donors, well-wishers, volunteers, patrons & staff who have helped us move forward in our mission.

We count on you for your continued support and good wishes.

Let's make the world a better place to live !!!



Regards,

**Prashanth Suvarna**

CEO

Child Help Foundation





# Message from Trustee

The motto of the Child Help Foundation is to help each child with basic necessities and develop his or her self-esteem to reach their potential.

It is good to help people, but we at Child Help Foundation believe, it is much better to Empower people, and that is the ultimate result of Education. Empowering the youth and people of all ages, to make this world a better place.

I am pleased to be a part of such an outstanding Non-profit-Org and look forward to a great new year.



Thanks and Regards,  
**Rajendra Pathak**



All organization in social development sector pursue to bring social change and this can happen speedily with active involvement of the philanthropist, potential supporters and corporate.

What is required is to bridge the gap between the "well to doers" & the "needy" by creating social engagement programs which will help in creating a "social ecosystem" ideal for the growth of any nation.

My dream project is to adopt 100 villages under the banner of Child Help Foundation & give free access to basic education for the needy.



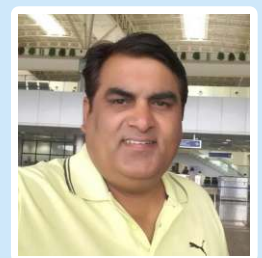
Thanks and Regards,  
**Sunil Varghese**

I like to congratulate Child Help Foundation staff and all stake holders who has taken enormous efforts to take the organisation to next level. CHF in last five years has improved lots in project implementation based on learning and experiences.

Recent studies and research activity carried out in CHF shows that the rural children and youth are a hugely untapped potential & need basic

counseling and an opportunity to excel. The current situation in their vicinity has left their potentials dormant for lack of opportunity. We at CHF aspire to get the affluent to tap the potential of the children and youth in the rural areas by giving them an equal existence.

I believe in the tag line "Whatever you give, comes back to you in thousand folds".



Thanks and Regards,  
**Jugender Singh**



# CHF at a glance

Child Help Foundation (CHF), is registered under Bombay Public Trust Act, 1950 with Reg. no. E-6427 and under Foreign Contribution and Regulation Act with Reg. no. 083990229. All donations are exempted from tax under 80G of Income Tax Act.

CHF got registered on 19<sup>th</sup> November 2010 since then dedicated towards betterment of underprivileged, neglected community with special focus on children's wellbeing. The Organization follows participatory principles during implementation, where all stakeholders play a vital role for the success and ownership of the projects.



Child Help Foundation (CHF) is dedicated to help needy and neglected children with the approach which focuses on children's basic education, development, intervention, medical treatment, health care and lot more. CHF geographical areas are well defined with our numerators and denominators.



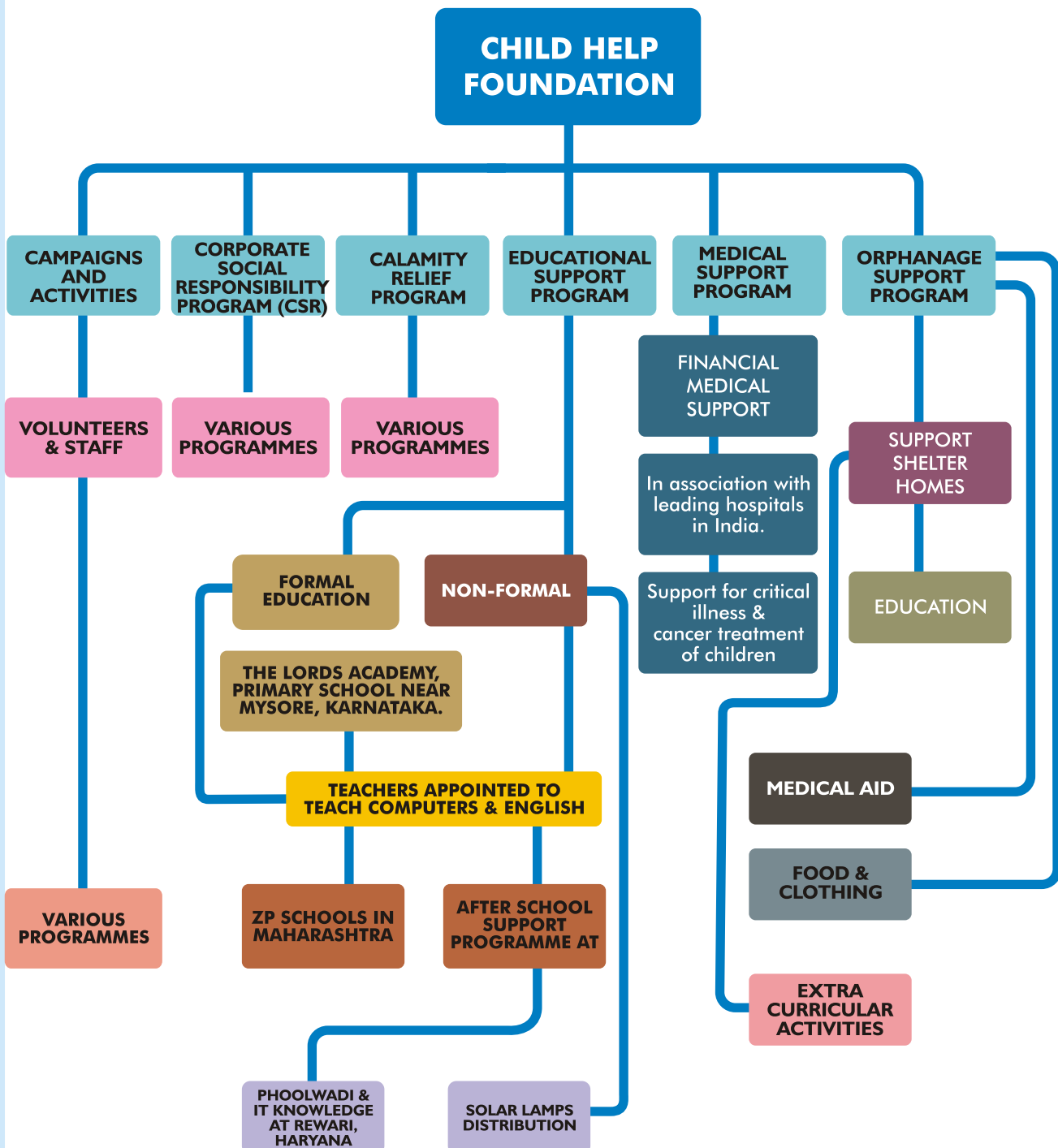




# Organogram

With a dynamic team in Mumbai, Bengaluru, Delhi, Bhubaneshwar and Rourkela, we have managed to implement a range of sustainable development programs for needy children in several cities of India.

Child Help Foundation caters to the underprivileged children by giving a holistic approach





CHF's helpful enthusiastic and energetic team of Child Help Foundation.

## BOARD OF TRUSTEES

C.E.O

PROJECT TEAM

ADMINISTRATION TEAM

ACCOUNTS TEAM

FUNDRAISING TEAM

CAMPAIGNING TEAM



Campaigning team



Projects team

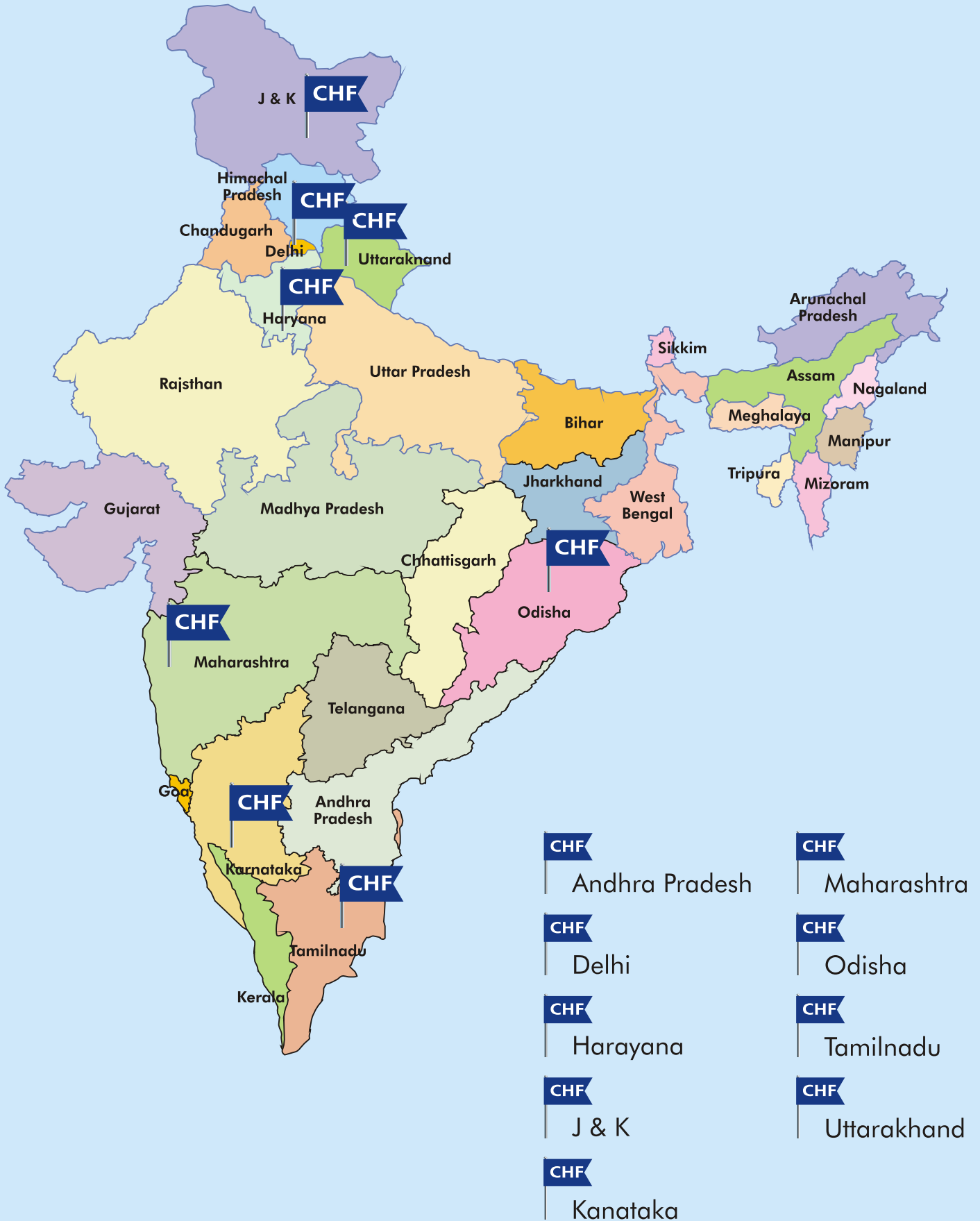


Accounts Team





# CHF Geographical Coverage of activities year 2014 - 15





## Empowering Grassroots:

Child Help Foundation believes that inclusion of girls is only possible through parental engagement and community involvement. Therefore, we believe in empowering girls through education. Educating a girl child can quickly solve immense amounts of social issues that have been prying over the country. Since literacy helps to form a strong foundation based on knowledge, truth and moral values, which if imbibed in a girl child, will only prove to benefit the family that she either belongs to or will be going to in the future. It comes out to be an asset, having female children educated.

Child Help Foundation Committee has laid down some essential steps in order to eradicate or lessen the bias attitudes of the families towards educating a girl child; which we have been following consistently.



### *These include:*

- Informing the families and parents about the importance of education and motivating them to bestow proper education for their female children particularly.
- Inculcating belief that whether you are addressing healthcare, poverty, population control, unemployment or human rights there's no better place to start than in the corridors of education.

Because education is both the means as well as the end to a better life: means, because it empowers an individual to earn his/her livelihood and the end because it increases one's awareness on a range of issues – from healthcare to appropriate social behavior to understanding one's rights - and in the process evolve as a better citizen.

Child Help Foundation works with under-privileged children who live under difficult circumstances such as child labour, we also assist children of poorest of the parents, street and runaway children, children with disaster struck and slum children etc.







# Empowering Grassroots

Child Help Foundation in India has been playing a crucial role in the social and economic growth of the nation. However, there has always been a need for a dedicated and effective endeavor that is focused on enabling small, genuine NGOs to bring excellence in their efforts. We, at Child Help Foundation take the necessary steps that are slowly minimizing the difficulties that the children of the society have to face on a daily basis.







# CHF Outreach Activities



CHF worked with 8 orphanages, 6 educational institutes (Out of this six, one school is governed by CHF), 1 special home for mentally challenged kids. In this partnership intervention we implement numerous programmes related to child support. This year we implemented 80 activities which dealt with the underprivileged children's holistic development, these programs were designed in such a way that they can be replicable as well as scalable in other orphanages and educational institutes.





# Orphanage Support Program

We support orphanages to effectively run their Shelter homes by assisting them in basic and critical expenses. The shelter homes are run by registered not for profit organisation working at grass root level in our targeted communities across India.

CHF has been making persistent efforts to provide support to orphans and vulnerable children so as to enable them to live a normal life like other children in the country. 8 orphanage shelter homes were being supported by CHF 4 in Maharashtra, 2 in Karnataka, 1 in Orissa, 1 in Tamil Nadu. These shelters are homes for 381 distressed children of 3 to 17 years age group who come from difficult circumstances that detach them from the joys of childhood.

CHF regularly supports these orphanages for childrens education and other activities.

**School fees - Uniforms - Books.**  
**CHF monetary support also includes medical expense & expense for food and shelter.**

## Objective of the Orphanage Support Program:



To provide qualitative education, shelter, cloth, food and medical treatment for every children in the orphanage.



To pave the way for their bright future and right career.



To ensure discipline, etiquettes and good characteristic features.



To impart awareness on personal hygiene and sanitation etc.



To provide them with other common facilities.



To provide them with nutrition food.

## All the Orphanages ensure the following facilities:



Nurture Care, enlighten children with values of life, promote a healthy, peaceful & disciplined environment for children residing in the orphanage.



Opportunities to access quality education & get vocational training, based on individual talent and academic interest.



A group of mentor, volunteers, who commit to nurture these children and bring stability and hope in their lives; & reinforce attachment in their lives.

## Our Orphanages follows the following traditions:



All 381 children are provided with lodging and boarding, school uniform, stationery, bed and all other amenities



Every child is provided with wholesome, nutrition diet to ensure his/her good physical and mental health.



‘Shramdan’ – self service, exercise, sports and games are indispensable part of childrens daily- routine.



During vacations, emphasis laid on extra – curricular activities such as, Special coaching is provided to children in  
❖ **Music** ❖ **Dance** ❖ **Craft** ❖ **Drawing**  
❖ **Painting** ❖ **Sport.**



# Orphanage Support Program

## Orphanage Support Activity

This year CHF supported orphanages to effectively run their Shelter homes by assisting them in basic and critical expenses like Shelter, Food, Education, Clothing and Medical requirements. CHF implementing partners under orphanage support are as below,

### Our implementing partners under O S P



#### **Amcha Ghar: Bhayander (west) Maharashtra**

- A shelter home for girls. This year CHF supported 22 kids aged 5-16 years, living in this day and night shelter home.



#### **Vision in social arena (Anmol Home): Mira Road, Maharashtra**

- A shelter Home for street children (boys and girls). strength 40 kids aged 5 to 16 years. C H F is providing financial support to pay school fees of this orphanage.



#### **St' Gonsalo Garcia Ashram : Vasai – west, Dist.Palghar, Maharashtra**

- A shelter home for 67 underprivileged children (only boys) aged between 5 to 17 years. CHF supported for teachers fee and maintenance of the orphanage. CHF also implements a Nutrition support program for children of St' Gonsalo school and orphanage.



#### **The Lords Home Mysore, Karnataka**

- This is a shelter home for boys and girls. In this orphanage there are 13 children's (Boys and Girls) aged between 5 to 14 years.





## Orphanage Support Program



### **Saraswati Anath Shikshan Ashram Pune, Maharashtra**

- CHF supports 28 (only boys) underprivileged children aged between 5 to 12 years. The Ashram is running well with CHF support and students are learning art and culture skills for which CHF motivates them regularly.



### **Kirod Basini Kanyashram, Angul, Odisha**

- Kirod Basini Kanya Ashram is a residential school for Girls. CHF is supporting 117 girls students in this residential school from last year.



### **Charis Foundation: Chennai, Tamil Nadu**

- Charis foundation is a shelter home for boys and girls. CHF supported 40 children (boys & girls) aged between 4 to 16 years



### **Karunalaya - Bangaluru, Karnataka**

- A shelter Home for 42 underprivileged children (boys and girls) aged 6 to 14 years. CHF is primarily supporting this orphanage to meet their day to day administrative expenses and support for children welfare.



# Education Support Program

## Our implementing Partners



### **Zilla Parishad School Rajavali village, Naigaon (E), Maharashtra.**

CHF has recruited an external teacher to teach English and Computers. CHF has provided 7 std. syllabus in pen drive. To maintain a clean and hygienic environment in the school, CHF has constructed six toilets.



### **Zilla Parishad School Tiwri village, Maljiwada, Naigaon (E), Maharashtra**

Strength of the school is 90 children. CHF external teachers also teach English and Computers in this school. Distribution of toys to develop children's creativity is initiated by CHF.



### **Koel Sarwati Shishu Vidya Mandir, Nehrupalli Rourkela, Odissa**

School assistance program - strength of 120 children. CHF intervention in this school supports the administration of the school to meet their administrative expense. School children's welfare is also taken care of.



### **St. Gonsala Garcia School - Vasai, Dist. Palghar Maharashtra**

School assistance program - strength of 170 children. CHF assistance in this school is utilized to meet the school teachers' salary and other running costs.



### **Khiroda Basini School - Katada village, Angul, Odisha.**

School assistance program - strength of 125 children. CHF specifically looks after children's welfare in this school through varied developmental activities which are carried out at periodical intervals. The financial support provided by CHF is supportive to meet their administrative expenses.





# Education Support Program

## Best Practices

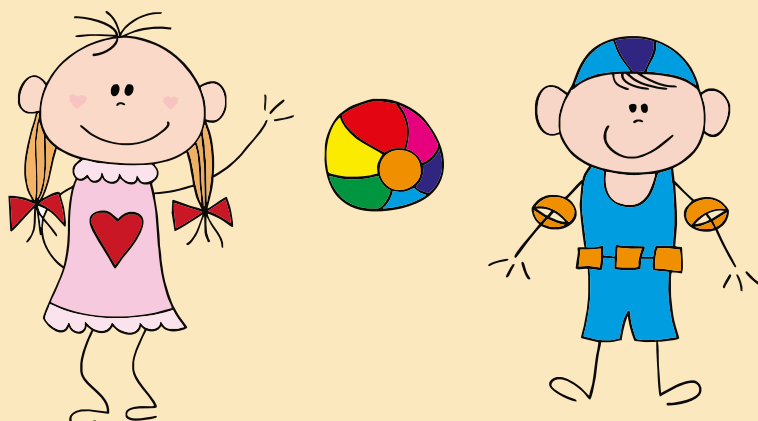
Parents teachers meeting to motivate parents to take home work & encourage children to study and revise there classroom session at home.



CHF project team, Parents and school staff in Parent Teachers meeting



Tarz company distributed school bags in Zilla Parishad school Rajavli School, Naigaon Taluka Vasai Dst. Palghar







## Water and Sanitation program



**SSWACH** Solving Sanitation, Water, Cleanliness & Hygiene issues

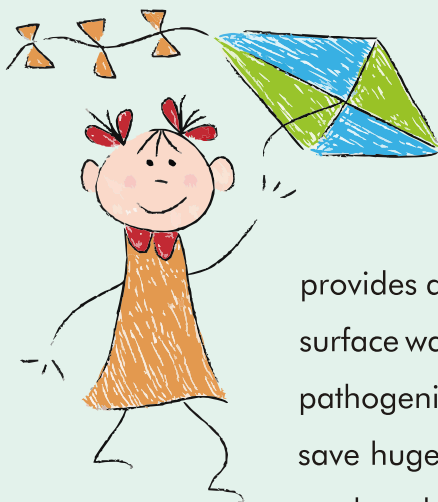
SSWACH project is Child Help Foundation's new intervention for cleanliness and hygiene.



CHF advocates sanitation facilities in schools and communities in unreached areas benefitting underprivileged children and disadvantaged groups of the community residing in remote and urban areas where sanitation facilities are below standards.

### OBJECTIVE

Accelerating sanitation coverage in rural areas. Bring about an improvement in the general quality of life in rural India.



**Salient Features:** CHF ensure that the toilets constructed remain clean, hygienic and odour free for which combined efforts and involvement of school committee and community groups is mandatory.

CHF sensitized the students and community people on use of toilets and provides awareness on sanitation and hygiene CHF intends to protect groundwater, surface water and soil from sewage pollution, prevent the accumulation of hazardous pathogenic waste, and solve the problem of disposing sewage sludge to Landfill, thus save huge quantities of water CHF strive to construct low-maintenance toilet which can be adapted to any situation.



CHF constructed toilet in Rajavli ZP school supported by Corporate.



# Water and Sanitation program

## Inauguration of School Toilet under Project SSWACH

Location: ZP School Rajavali Village, Naigao, Tal.Vasai, Dist. Palghar, Maharashtra



Toilet Kit donated by CHF to the School



Front Side of the School Toilet



Campaign and advocacy



Oath taking by Students & staff on maintenance of school sanitation



Chief Guest cutting the ribbon



Inauguration Banner





## Koel Saraswati Shishu Vidya Mandir, Nehrupalli, Rourkela, Orissa

Koel Saraswati Shishu Vidya Mandir is a Oriya medium school for children with strength of 120 students from Nursery to class Seventh in Rourkela Municipal Corporation. Most of the students are from disadvantaged and poor family as the school is located near huge slum call Nehru Palli in Rourkela.



Child Help Foundation has done the repairing work of school toilet in Koel Sarswati School Orissa.

CHF mobilizes community ownership to create hygienic environment in the community.



### **Best Practices in Water and Sanitation Program (SSWACH) Solving Sanitation, WATER, Cleanliness & Hygiene issues:**

SSWACH programme is not all about building toilets but it's a advocacy project, where efforts are been taken to empower rural public on maintaining community sanitation, which involves lessons on cleanliness and hygiene.

CHF strives to develop community ownership that the toilets constructed by governments or through support of NGO or CSR must be maintained on regular basis which is the prime responsibility of people who are using it. In this regard CHF has developed manuals, IEC–Information, Education and Communication material on Toilet maintenance. CHF do have a concrete sustainability plan for toilet maintenance which include continuous monitoring system to ensure that the toilets constructed are left in clean and hygienic condition.





## Medical Support - 2014 -15



CHF is providing comprehensive services to cover health care needs to hospitals linked with. CHF provides qualitative health care and medical treatment services to poor, needy and underprivileged children's and orphans. CHF focus that these children's are not neglected when they require support from community and hence want to ensure that the critically ill child get right care and support at the right time to avoid casualty. Child Help Foundation sponsored 15 children for their critical surgeries and 36 children for their cancer treatment.

### CASE STUDIES

#### Payal Prajapati



Gender: Female • Age:5 yrs.  
Location : Nalasopara, Dist. Palghar, Maharashtra

Payal Prajapati a five year old girl child was suffering with a critical illness called 'Nephritic syndrome' which is a disease related to Kidney dysfunction and had to undergo dialysis as per doctors recommendation. She was admitted in Wadia Hospital and her total treatment cost was 230000. Payal comes from a "Below poverty line" family and her parents could not afford the recommended treatment cost, fortunately through close relatives reference Payal's father was introduced to CHF for his daughters treatment cost. However the time was less to raise the complete treatment cost and CHF was able to manage 50000 in support of Payals' treatment cost for dialysis.

#### Faizan Pirajade



Gender: Male • Age: 2 yrs.  
Location : Dist. Solapur, Maharashtra

Faizan a two year old boy child was having a hole in her heart and was admitted in Seven Hills Hospital, Mumbai. Doctors recommended for his open heart surgery. The surgery cost estimated was 380000/-. Faizan's father did not have stable job and had economical problem, for him managing the cost was difficult. The Hospital administration shared Faizan's case with CHF project team and CHF released full amount in support of Faizan's surgery. Faizan was operated on 29th Oct' 2014.

#### Arohi Rede



Gender: Female • Age: 6 months.  
Location : Dist. Sangli, Maharashtra

Arohi Rede a three months old baby girl was having a hole in her heart and was admitted in Seven Hills Hospital, Mumbai. Doctors recommended for her open heart surgery. The surgery cost estimated was 190000/-. Arohi's father's salary is not enough which can meet the surgery cost and that's how they came to CHF from hospital recommendation for help. CHF focus is save the girl child and understood the emergency and released full amount in support of Arohi's surgery.



## Medical Support - 2014 -15



Recommended from Chief Minister, Maharashtra, Medical Support Cell, Mantaralaya

### Nayana Swaroop



Gender: Female, Age: 3 years. Location : Pune, Maharashtra.

Nayana is a three years old girl child residing in Pune. She is suffering with heart disease for which doctors recommended for major heart surgery. Nayana comes from a BPL family and her parents economical condition is not sound. Nayana's father and relatives approached the CM medical support cell and through them the case was further referred to CHF for financial support required for Nayana's surgery. The surgery cost was Rs.1,75000/- which was highly impossible for her father to manage as he had no support from anywhere. Nayana was admitted in Deenanath Mangeshkar hospital, Pune. CHF paid full amount to hospital for her surgery.

### Pratibha Gupta



Gender: Female, Age: 6 Months, Location : Mumbai. Maharashtra.

Pratibha who is just six months old baby girl, suffering with heart disease for which doctors recommended for major heart surgery. At time Pratibha was critically ill. Pratibha come from BPL family. The surgery cost was 1,90000 which was highly impossible for her father to manage as he had no support from anywhere. Arohi was admitted in Seven hills hospital and through hospital recommendation Arohi's father approached CHF.

Her parents were worried about Arohi's deteriorated condition, as she was just 6 months old at time of her illness and her mother was crying continuously, her parents were also getting negative thoughts of whether their child will recover or not. CHF project counselled Pratibha's parent to come at comfort level and supported with full cost required for surgery.

### Shubham Shirsagar



Gender: Male, Age: 3 yrs. Mumbai, Maharashtra

Shubham a three year old boy child suffering with heart disease was admitted in Seven Hills Hospital, Mumbai. His parents approached CHF with a request for supporting for their son's surgery expense which was estimated Rs.4,25000/- His parents could not manage the expense as their economical condition is not good, CHF supported with full amount for Shubham's open heart surgery.





## Medical Support - 2014 -15



### Karishma Palavi



Gender: Female Age: 5 yrs. Location : Thane, Maharashtra.

Karishma a five year old girl child suffering with heart disease was admitted in Kokilaben Ambani Hospital, Mumbai. Her parents approached CHF with a request for supporting for their daughter's surgery expense which was estimated Rs.3,50000/- Her parents could not manage the expense as their economical condition was not good, CHF supported with full amount for Karishma's open heart surgery.

### Sidrah Kasim Kadri



Gender: Female, Age : 3 year's Location : Ratnagiri, Maharashtra.

Sidrah a three year old girl child was suffering with heart disease for which doctors recommended for major heart surgery. Her situation was critical, also her parents economical condition was not sound. Her father had no fixed job and mother a house wife. The surgery cost was Rs.4,20,000/- which was highly impossible for her father to manage as he had no family and support from anywhere. Sidrah was admitted in Seven hills hospital and through hospital recommendation Sidrah's father approached CHF. Her parents were tensed and were crying continuously as they were worried about how to raise the treatment cost and whether their child would recover. CHF project team showed empathy towards her parents and consoled them to have courage. CHF took lots of efforts to support Sidrah and her parents and supported with full cost required for surgery.

### Megha Songire



Gender: Female Age: 12 yrs. Location : Shirpur, Dhule, Maharashtra

Megha Songire a twelve year old girl was having a hole in her heart and was admitted in Seven Hills Hospital, Mumbai. Doctors recommended for her open heart surgery. The surgery cost estimated was Rs.3,50,000/-. Megha's father do not earn good salary from where he can manage the surgery cost and due to their economical problem and hence managing the cost was difficult for Megha's family. The Hospital administration shared Megha's case with CHF project team and CHF released full amount in support of Megha's surgery.



## Medical Support - 2014 -15



### Vedant Raut



Gender: Male, Age: 6 yrs.  
Location : Parbhani Sonpeth, Maharashtra.

Vedant a six year old boy was admitted in seven hills hospital and required urgently to be operated for open heart surgery. His total treatment cost was 3,40000 which his parents could not afford. Hence his case was referred to CHF for further financial support. CHF supported with complete amount.

### Atahar Khan



Gender: Male Age: 3 yrs.  
Location : Goregaon (West), Mumbai, Maharashtra.

Atahar a three years old boy child is having a hole in her heart and is admitted in Seven Hills Hospital, Mumbai. Doctors recommended for his open heart surgery. The surgery cost estimated Rs.2,60,000/-. Atahar comes from disadvantaged family and his father's salary is not enough to meet the surgery cost and that's how they came to CHF from hospital recommendation for help. CHF has released full amount in support of Athahar's surgery.

### Alam Nashra Sohail Kumari



Gender: Female Age:9 Location : Bhiwandi, Dist. Thane, Maharashtra

Alam Nashra a nine year old girl child was admitted in seven hills hospital and required urgently to be operated for open heart surgery. Her total treatment cost was Rs.3,80,000/- which her parents could not afford. Hence her case was referred to CHF for further financial support. Alam Nashra has to stop her education in middle for treatment purpose, after understanding the case CHF project team wanted her to get well soon so that she could continue with her education and hence supported Alam with full surgery expense required.





## Shambhavi Thorat



Gender: Female, Age: 5 Months.  
Location : Ambivali (E) Kalyan, Maharashtra

Shambhavi who was just 5 months old baby girl at that time was suffering with heart disease for which doctors recommended for major heart surgery. Her situation was critical, also her parents economical condition is weak. The surgery cost was Rs.1,90,000/- which was highly impossible for her father to manage as he had no support from anywhere. Shambhavi was admitted in Seven hills hospital and through hospital recommendation Shambhavi's father approached CHF. Her parents were worried about Shambhavi's deteriorated condition and were in deep sorrow, as they were worried about how to raise the treatment cost and whether their child would recover. CHF project team empathised her parents and counselled them to come at comfort level and supported with full cost required for surgery.





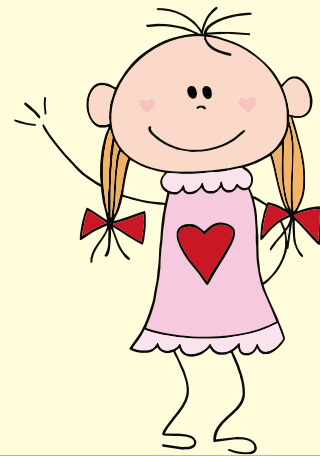
## Medical Support

### Success story

Arohi Rede is a baby girl who was suffering with a heart disease and was admitted in Seven Hills Hospital Mumbai. Arohi's open heart surgery was successfully accomplished with the support of CHF. After Arohi's discharge from hospital her father visited CHF office and acknowledged the efforts and support of CHF team.



◀ Arohi's parents are happy & smiling. Arohi's recovery has happened speedily.



**Nayna's open heart Surgery successfully accomplished at Dinanath Mangeshkar Hospital Pune.**





# Medical Support

## List of children's treated on cancer Tata Hospital Cancer patients list

Sr.No.	Name the of child	Sr.No.	Name the of child
1	Saniya Banu Tofik Shaikh	19	Rivu Nimal Mondal
2	Mohammad Nadeem	20	Avishka Dipak Sawant
3	Pooja Manbodh Seth	21	Shraddha Sainath Kumbhakarna
4	Rohit Motiram Deshmukh	22	Komal Kumari Brij Bihari Mandal
5	Vansh Kumar Vikas Yadav	23	Komal Sapurda Kakar
6	Ruturani Bhoi	24	Tasmiya Shaikh
7	Abhinav Kumar Sharma	25	Vedant Tripathi
8	Shravya Jagdish Patne	26	Aadesh M. Koli
9	Sadam Rafiq Ansari	27	Chotu Kumar Munnu Sonkar
10	Vansh Kumar Vikas Yadav	28	Aditya Kumar
11	Aafreen Nagori	29	Mainak Dey
12	Disha Singha	30	Kamlesh Vasudev Dhangar
13	Muskan Mansuri	31	Arushi Gound
14	Gautam Ram Ratan Prasad Nawada	32	Kiran Kumari
15	Alafiya Akhtar Shaikh	33	Prasad Pradeep Dinde
16	Rajesh Sahu	34	Ronika Chanu R. Sanasam
17	Mayank Gopal Prajapati	35	Soni Kumari L. Mahto
18	Rohit V Rathod	36	Avishakar Anil Kadam



# Health and Nutrition Program

This is a program under which children from orphanages & rural schools gets daily nutrition supplements.



## OBJECTIVE

To provide Health Care to the orphans and vulnerable children with basic nutrition diet To reduce malnutrition rate among children residing in CHF supported orphanages

### Details of Nutrition supplement:



- CHF provides nutritious Cost effective nutrition supplement in form of tasty cookies.
- In one single cookie, children consume ~100% RDA of essential vitamins (A, D, folic acid), minerals (iron, calcium) and protein.
- Coupled with deworming, vitamin A prophylaxis

### Content of cookies:

Whole wheat, Oats, Soya bean okara

### Fortified with:

- Vitamin A • Vitamin D-'''Calcium
- Iron • Folate

### The nutritive value of cookies:

Super cookies  
Quantity of product

30 gm (4 cookies)  
100 gm (13 cookies)  
120 400 Iron(mg)  
Folic acid(meg)

16 53 Calcium (mg)  
500 1667 Vitamin A (IU)  
667 2223 Vitamin D (IU)  
600 2000 Protein (gm)

3.5-4 12 Sugar (gm)  
3.5 12 Carbohydrate (gm)  
10 33 Fat (gm) 2.1 7

## Features:

These cookies have more micronutrients than commonly distributed products in Schools and Anganwadis. The meals are inexpensive, safe and tasty. These tasty cookies are enjoyed by the kids Regular medical check-ups are conducted to monitor the children health status after consuming the cookies. This nutrition supplement is beneficial to tackle malnutrition



- Incremental weight gain in 1 year.
- Multivitamin deficiency issue is coming under control
- Significant increase in hemoglobin levels in 1 year

**Impact:** A internal evaluation was done post one year of nutritional cookies provision to children. The evaluation was done by a primary health care physician, which was done in 4 stages every 3 months. The observations identified during the evaluation is as follows.

- Incremental weight gain in one year.
- Significant increase in hemoglobin levels in one year
- Multivitamin deficiency issue is coming under control.





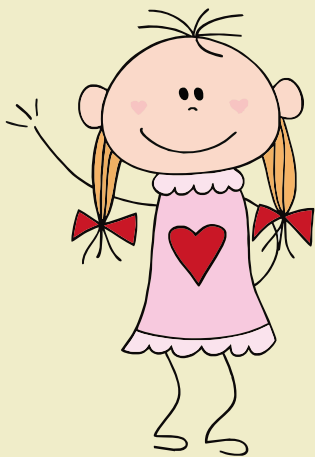
## Old Age Support Program

Child Help Foundation is working towards betterment of senior citizen by supporting Old Age Homes.

Old age people are senior citizens of our country, many old people who are left on the streets and have no one who can take their care. CHF under its Old age support program is supporting such old people who have no one and who are materially dependent on support of others. At present CHF is supporting a old age home operated by Asha Kiran in state of Uttarakhand.

### Asha Kiran Sewa Ashram

Old Age support program is a joint initiative of Asha Kiran Sewa Ashram with Child Help Foundation, where in more than 50 old age people are provided with in house services and health care facility.



Old age residents in Asha Kiran old age home, Uttarakhand.



Meditation and Yoga workshop for old age women.





## Campaign & Volunteer Program

Child Help Foundation under its campaign and volunteer programme conducts various advocacy campaign, awareness programs and give space for individual, group and corporate volunteer to utilise their time in a constructive way by sharing their talent, experience and knowledge for empowering children in CHF supported orphanages and schools. The varied list of Campaign and volunteer program is as below,

- Save the girl child awareness drives
- Health awareness drives
- Marathons
- Knee support belts for the old age people
- Save the environment drive
- Corporate employee engagement
- Festive Celebrations
- Orphans wish list activity
- SUPW –  
Socially Useful Productive Work
- Cyclothons
- Children day celebration
- Resource mobilization campaigns
- In kind Donation Drive
- Daan Utsav



### Advocacy Campaign:

CHF constructed 6 toilets in Zilla Parishad school at Rajavali village. After the construction CHF conducted a sensitization program where the children and staff were motivated to maintain cleanliness in toilet by practicing proper sanitary habit. CHF project team also conducted parent teachers meeting in Rajavali and Tiwri schools. In this meeting parents were sensitized on children physical and mental well being.



### Environment:

To bring importance in school children about green and clean environment CHF conducts regular eco friendly drives by motivating various stake holders. CHF with support of local corporate planted 100 trees in CHF supported orphanages and schools. Corporate such as Deloitte Pvt. Ltd. deputed their skillful staff to volunteer for our "Save The Environment" campaign.



### Health Care:

CHF periodically conducts health awareness campaign in vulnerable and marginalized area and sensitize communities on basic public health care. In collaboration with local corporate CHF conducted health camp for children and community woman in and around Vasai Taluka district Palghar.